

5K

BRONZE LIFT CHECK VALVE

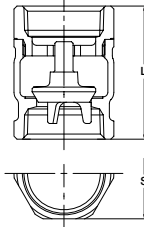
Screwed cap, Lift type disc
Threaded ends

W.O.G. non-shock 120°C (0.49 MPa)



Fig. VF

• Threaded end to BS21



Materials

Parts	Material
Body	Bronze
Cap	Bronze
Disc	Bronze

Dimensions

Nominal Size	mm			
	inch	1 1/4	1 1/2	2
	mm	32	40	50
L Threaded end to end		62	69	82
S		45	52	63

5K

BRONZE LIFT CHECK VALVE

Screwed cap, Lift type disc
Threaded ends to B21 (JIS B0203)

Water 80°C (0.49 MPa)



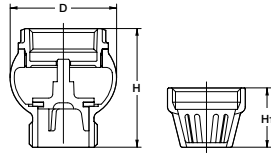
Fig. FT

• Threaded end to BS21 (JIS B0203)



Fig. FTS

(Screen)



Materials

Parts	Material
Body	Bronze
Cap	Bronze
Disc	NBR

Dimensions

Nominal Size	mm							
	inch	3/4	1	1 1/4	1 1/2	2	2 1/2	3
	mm	20	25	32	40	50	65	80
H Height		48	58	62	70	80	90	100
D		41	52	62	70	83	102	116
H1 Screen		25	29	32	35	43	50	51

CLASS 150

Y-PATTERN STRAINER

Y-Pattern body, Screwed cap, 304 stainless steel screen
Threaded ends to BS21 (JIS B0203) or NPT,
or solder joint ends.

W.O.G. non-shock 2.07 MPa (300 psi), Saturated steam pressure 1.03 MPa (150 psi) up to size 2*

*Contact KITZ for larger sizes



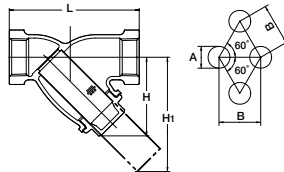
Fig. Y

• Threaded end to BS21 (JIS B0203)



Fig. CY

• Solder joint ends to JIS B2011 / ASME B16.18 (2 1/2 & 3)



Materials

Parts	Material
Body	Bronze
Body cap	Brass
Screen	Type 304 stainless steel

	A	B
3/8 to 2	1.4	2.4
2 1/2 to 3	1.5	2.5

Caution Solder joint end valves should not be used in service where the temperature of line fluid is higher than the softening point of solder.

Dimensions

Nominal Size	mm									
	inch	3/8	1/2	3/4	1	1 1/4	1 1/2	2	2 1/2	3
	mm	10	15	20	25	32	40	50	65	80
L Threaded end to end		70	80	100	115	135	160	195	230	240
L1 Solder			80	105	125	145	170	210	250	280
H Height		44	49	57	70	82	98	121	148	180
H1		61	68	83	105	124	149	188	216	267

Fig. AKY

• Threaded end to ASME B1.20.1